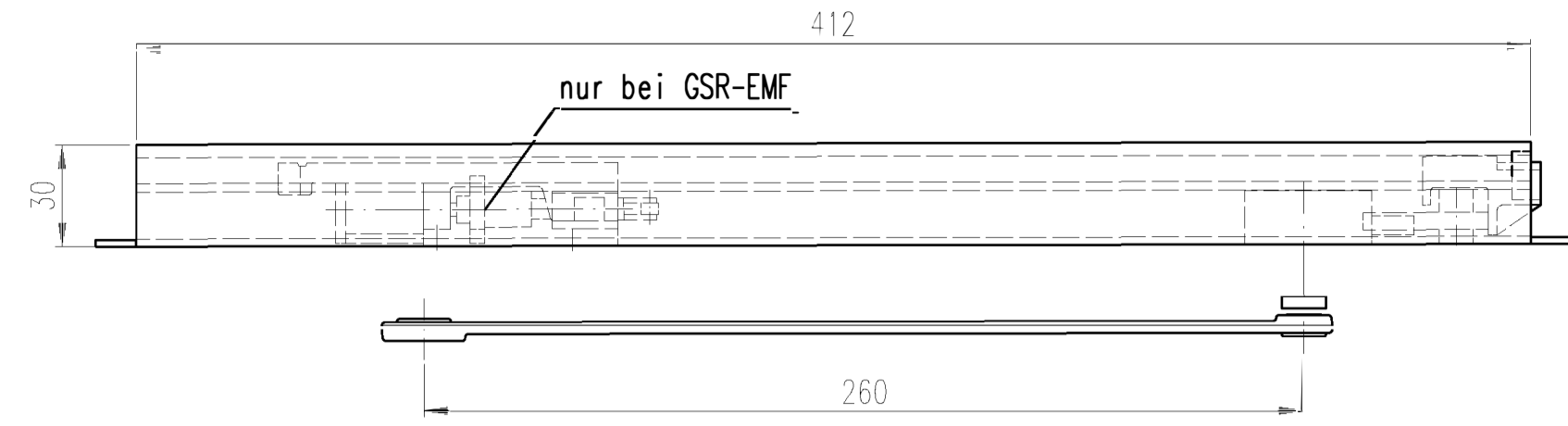
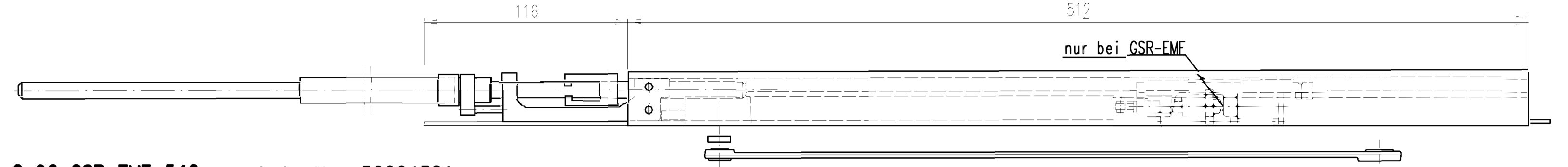
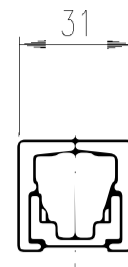


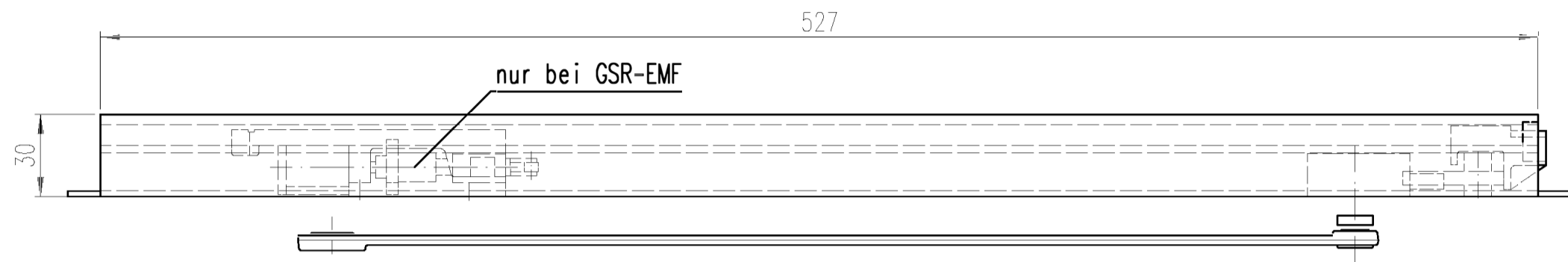
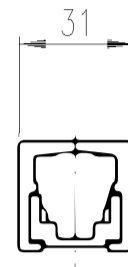
# ITS96 Komponenten K8/K12



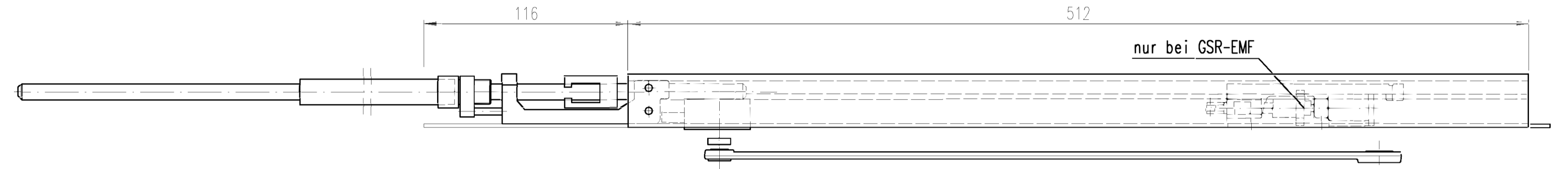
DORMA Gleitschiene G 96 GSR EMF 540mm Art.-Nr. 52004301  
 DORMA Gleitschiene G 96 GSR 540mm Art.-Nr. 52004201



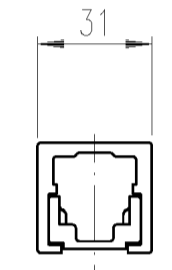
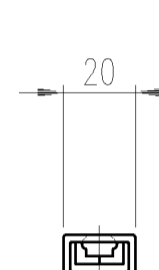
DORMA Gleitschiene G 96 GSR EMF Art.-Nr. 52001701  
 DORMA Gleitschiene G 96 GSR Art.-Nr. 52001801



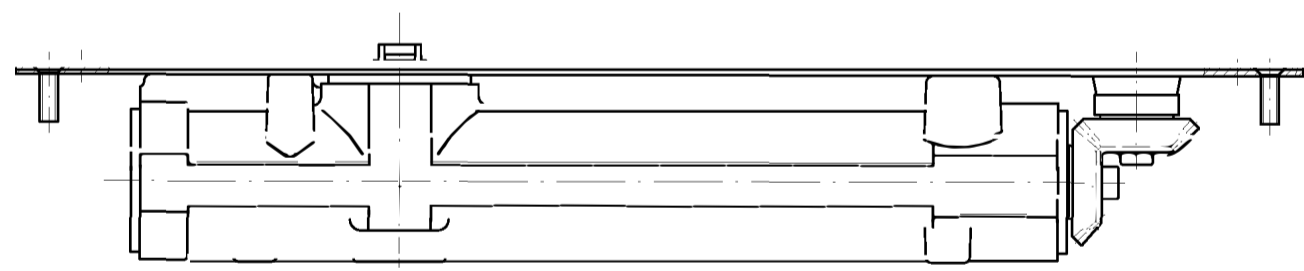
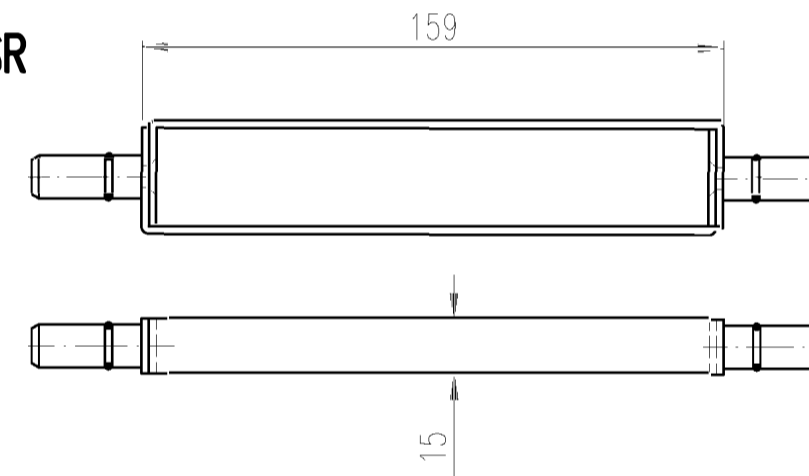
DORMA Gleitschiene G 96 N 20  
 DIN-links Art.-Nr. 52003701  
 DIN-rechts Art.-Nr. 52003801



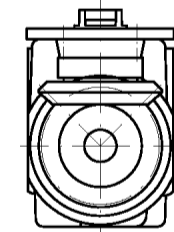
DORMA Gleitschiene G 96 EMF  
 DIN-links Art.-Nr. 52001501  
 DIN-rechts Art.-Nr. 52001601



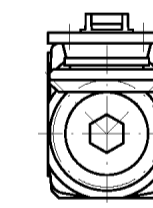
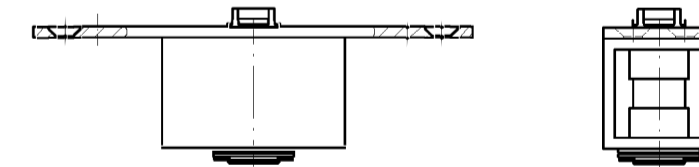
DORMA Verbindungsrahmen GSR  
 Art.-Nr. 524004400  
 (Einsatz bei Einbau von E-Öffner)



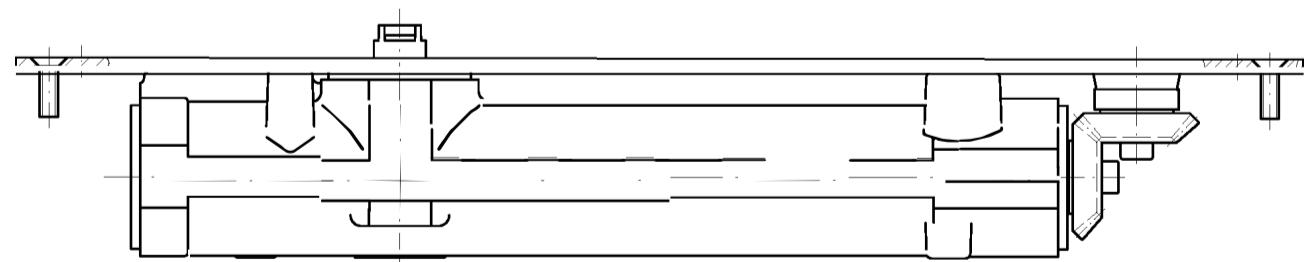
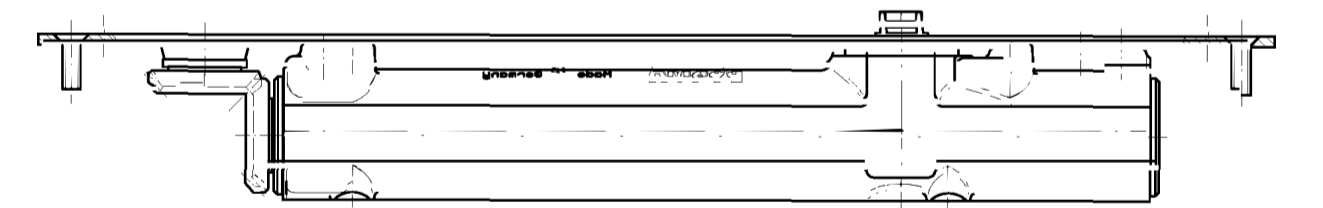
ITS96 3-6  
 Art.-Nr. 52250150



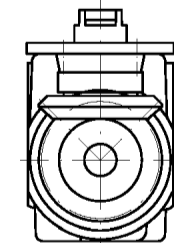
ITS Drehlager Art.-Nr. 52003400



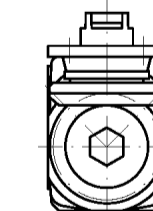
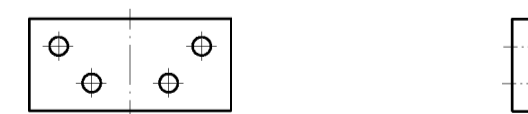
ITS96 2-4  
 Art.-Nr. 52400150



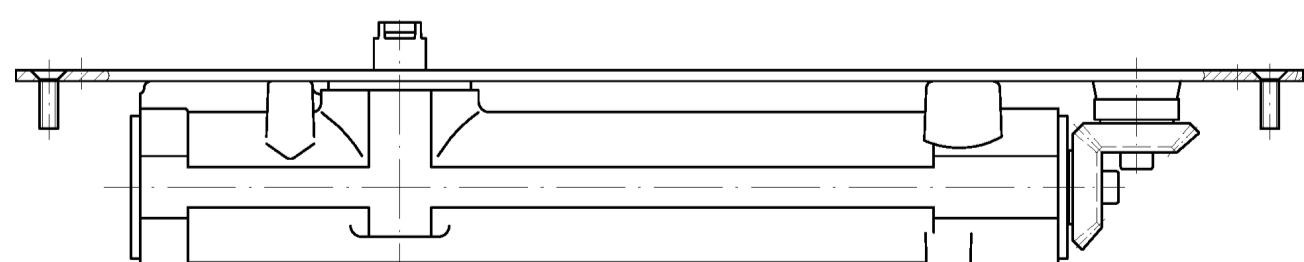
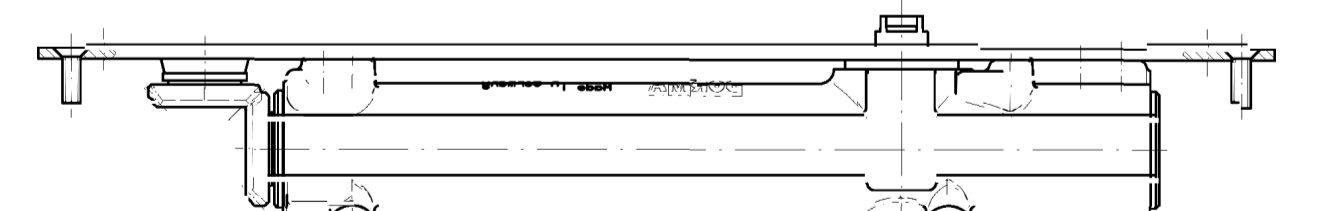
ITS96 3-6  
 mit 4mm verl. Achse  
 Art.-Nr. 52260150



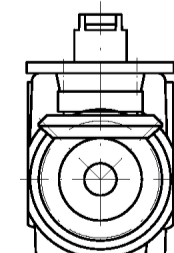
Befestigungsplatte 52000300



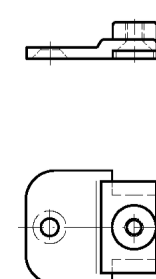
ITS96 2-4  
 mit 4mm verl. Achse  
 Art.-Nr. 52410150



ITS96 3-6  
 mit 8mm verl. Achse  
 Art.-Nr. 52270150



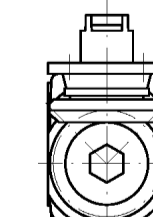
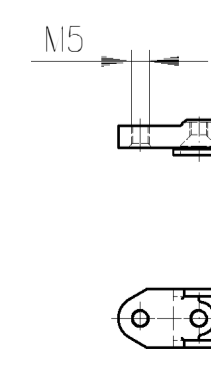
Befestigungselement  
 52000105



Befestigungselement  
 52000205



Befestigungselement  
 52000405



ITS96 2-4  
 mit 8mm verl. Achse  
 Art.-Nr. 52420150

